

Tudor Ave between Seaview Rd and McAnally Rd

March 03, 2020 To March 05, 2020



The data presented here is for information purposes only and should not be considered authoritative for construction, geotechnical, engineering, navigational, legal, or other site-specific uses. The information shared is owned by the Transportation Division of the Engineering Department at the District of Saanich. Accuracy is not guaranteed.

Start Date: 2-Mar-20
 Start Time: 0:04
 Station ID: C0070-01

Location 1: Tudor Ave between Seaview Rd and McAnally Rd

Note:

DATE:	March 2, 2020		March 3, 2020		March 4, 2020		March 5, 2020		March 6, 2020		WK AVG		WK AVG	HOURLY
	MON		TUE		WED		THURS		FRI		EB	WB	CH 1+2	%
Time:	EB	WB	EB	WB	EB	WB	EB	WB	EB	WB	EB	WB		
12-1 AM			1	1	1	0	3	0			2	0	2	0.2%
1-2 AM			0	0	1	0	1	2			1	1	1	0.1%
2-3 AM			1	1	0	1	0	0			0	1	1	0.1%
3-4 AM			0	0	0	0	1	1			0	0	1	0.1%
4-5 AM			1	4	0	1	1	1			1	2	3	0.2%
5-6 AM			3	4	1	4	1	3			2	4	5	0.5%
6-7 AM			4	12	3	14	2	13			3	13	16	1.4%
7-8 AM			15	48	15	50	16	37			15	45	60	5.3%
8-9 AM			36	58	38	60	37	54			37	57	94	8.3%
9-10 AM			30	45	36	45	30	48			32	46	78	6.8%
10-11 AM			30	44	48	42	38	39			39	42	80	7.0%
11-12 PM			42	38	38	49	34	44			38	44	82	7.2%
12-1 PM			37	41	44	41	36	46			39	43	82	7.2%
1-2 PM			40	48	38	46	37	34			38	43	81	7.1%
2-3 PM			52	44	40	41	44	42			45	42	88	7.7%
3-4 PM			59	42	67	42	60	46			62	43	105	9.2%
4-5 PM			44	46	53	45	54	44			50	45	95	8.4%
5-6 PM			57	35	50	42	46	41			51	39	90	7.9%
6-7 PM			38	22	40	33	40	24			39	26	66	5.8%
7-8 PM			28	13	16	9	26	25			23	16	39	3.4%
8-9 PM			19	9	8	9	18	4			15	7	22	2.0%
9-10 PM			13	5	21	7	20	5			18	6	24	2.1%
10-11 PM			10	8	16	2	16	8			14	6	20	1.8%
11-12 AM			5	1	2	1	5	4			4	2	6	0.5%
LANES			565	569	576	584	566	565			569	573	1142	100.0%
TOTAL			1134		1160		1131				1150			
	MON		TUE		WED		THURS		FRI		WK AVG			

PEAK HOUR					TOTAL VEHICALS-PEAK PERIODS		2 HOUR PEAK INTERVALS			
MAX. 7 - 9 am PEAK HOUR	94	⇒	8.3%	between 8-9 AM	504	⇒ 6 HR TOTAL	2 HR AM (7 - 9 AM)			
MAX. 7 - 11 am PEAK HOUR	94	⇒	8.3%	between 8-9 AM	340	⇒ 4 HR TOTAL	VEH / HR	VEH / 2HR	2 HR %	
MAX. 11 am - 1 pm PEAK HOUR	82	⇒	7.2%	between 11-12 PM			7-8 AM	60	155	13.5%
MAX. 11 am - 3 pm PEAK HOUR	88	⇒	7.7%	between 2-3 PM			8-9 AM	94		
MAX. 4 - 6 pm PEAK HOUR	95	⇒	8.4%	between 4-5 PM			2 HR NOON (11 - 1 PM)			
MAX. 3 - 6 pm PEAK HOUR	105	⇒	9.2%	between 3-4 PM			VEH / HR	VEH / 2HR	2 HR %	
							11-12 PM	82	163	14.3%
							12-1 PM	82		
							2 HR PM (4 - 6 PM)			
							VEH / HR	VEH / 2HR	2 HR %	
							4-5 PM	95	186	16.3%
							5-6 PM	90		

Tudor Ave between Seaview Rd and McAnally Rd

Westbound

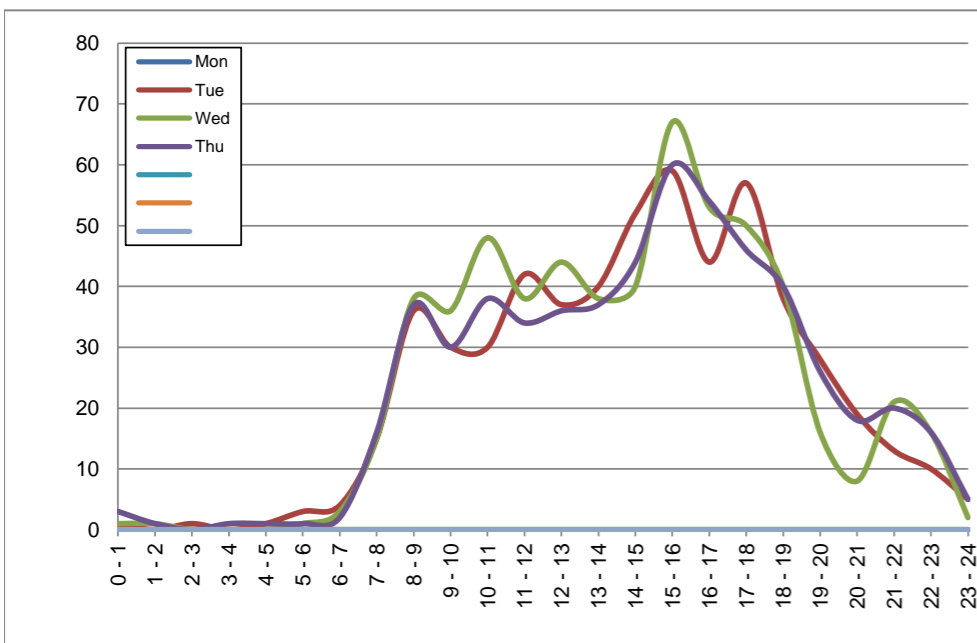
March 2, 2020 to March 5, 2020

Hourly Volumes

Time Period	Mon Mar 2	Tue Mar 3	Wed Mar 4	Thu Mar 5
0 - 1		1	1	3
1 - 2		0	1	1
2 - 3		1	0	0
3 - 4		0	0	1
4 - 5		1	0	1
5 - 6		3	1	1
6 - 7		4	3	2
7 - 8		15	15	16
8 - 9		36	38	37
9 - 10		30	36	30
10 - 11		30	48	38
11 - 12		42	38	34
12 - 13		37	44	36
13 - 14		40	38	37
14 - 15		52	40	44
15 - 16		59	67	60
16 - 17		44	53	54
17 - 18		57	50	46
18 - 19		38	40	40
19 - 20		28	16	26
20 - 21		19	8	18
21 - 22		13	21	20
22 - 23		10	16	16
23 - 24		5	2	5
Day Total		565	576	566

15-Minute Volumes

Time Start	Mon Mar 2	Tue Mar 3	Wed Mar 4	Thu Mar 5	
0:00		1	0	3	
0:15		0	0	0	
0:30		0	0	0	
0:45		0	1	0	
1:00		0	0	0	
1:15		0	0	0	
1:30		0	0	0	
1:45		0	1	1	
2:00		0	0	0	
2:15		1	0	0	
2:30		0	0	0	
2:45		0	0	0	
3:00		0	0	0	
3:15		0	0	1	
3:30		0	0	0	
3:45		0	0	0	
4:00		0	0	1	
4:15		0	0	0	
4:30		1	0	0	
4:45		0	0	0	
5:00		0	0	0	
5:15		1	0	0	
5:30		2	0	1	
5:45		0	1	0	
6:00		1	1	0	
6:15		0	0	1	
6:30		2	1	1	
6:45		1	1	0	
7:00		4	0	1	
7:15		3	4	7	
7:30		2	1	1	
7:45		6	10	7	
8:00		7	9	9	
8:15		8	8	10	
8:30		8	13	8	
8:45		13	8	10	
9:00		10	6	10	
9:15		4	8	6	
9:30		9	13	5	
9:45		7	9	9	
10:00		6	13	7	
10:15		8	7	7	
10:30		7	13	16	
10:45		9	15	8	
11:00		8	10	11	
11:15		11	13	8	
11:30		12	10	11	
11:45		11	5	4	
12:00			8	9	10
12:15			12	15	3
12:30			9	12	12
12:45			8	8	11
13:00			16	5	10
13:15			8	7	12
13:30			8	10	8
13:45			8	16	7
14:00			16	8	14
14:15			9	11	12
14:30			7	12	11
14:45			20	9	7
15:00			11	19	9
15:15			15	15	14
15:30			19	9	12
15:45			14	24	25
16:00			11	9	19
16:15			6	13	7
16:30			18	17	10
16:45			9	14	18
17:00			18	12	15
17:15			18	19	10
17:30			15	8	10
17:45			6	11	11
18:00			14	16	11
18:15			11	10	10
18:30			6	10	7
18:45			7	4	12
19:00			5	5	12
19:15			14	8	7
19:30			7	1	6
19:45			2	2	1
20:00			5	2	3
20:15			7	1	5
20:30			3	2	4
20:45			4	3	6
21:00			3	5	6
21:15			5	6	5
21:30			1	6	5
21:45			4	4	4
22:00			3	4	5
22:15			2	7	4
22:30			4	4	3
22:45			1	1	4
23:00			2	1	1
23:15			1	0	1
23:30			1	1	2
23:45			1	0	1



Site notes:

Tudor Ave between Seaview Rd and McAnally Rd

Eastbound

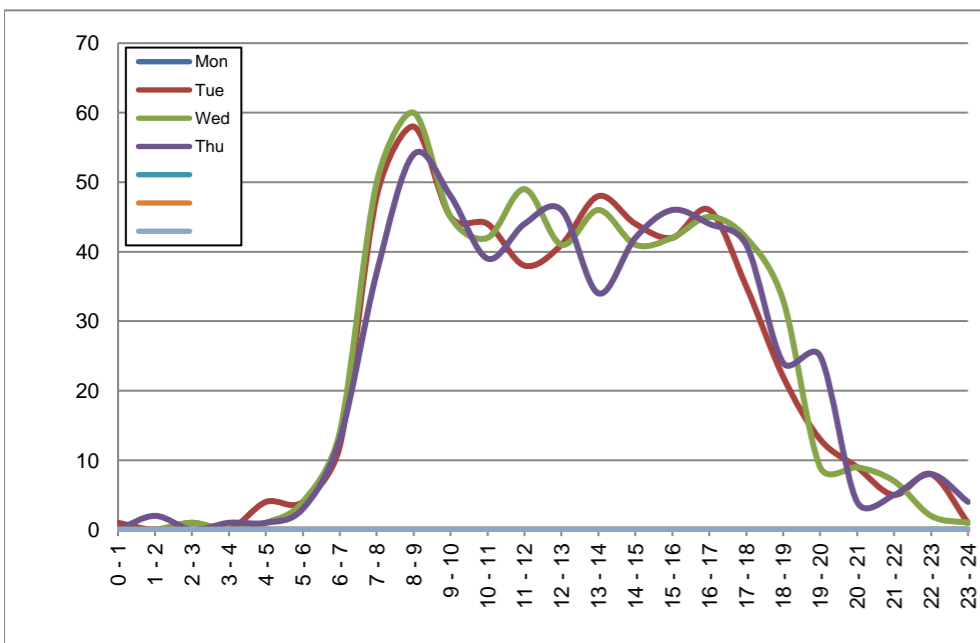
March 2, 2020 to March 5, 2020

Hourly Volumes

Time Period	Mon Mar 2	Tue Mar 3	Wed Mar 4	Thu Mar 5
0 - 1		1	0	0
1 - 2		0	0	2
2 - 3		1	1	0
3 - 4		0	0	1
4 - 5		4	1	1
5 - 6		4	4	3
6 - 7		12	14	13
7 - 8		48	50	37
8 - 9		58	60	54
9 - 10		45	45	48
10 - 11		44	42	39
11 - 12		38	49	44
12 - 13		41	41	46
13 - 14		48	46	34
14 - 15		44	41	42
15 - 16		42	42	46
16 - 17		46	45	44
17 - 18		35	42	41
18 - 19		22	33	24
19 - 20		13	9	25
20 - 21		9	9	4
21 - 22		5	7	5
22 - 23		8	2	8
23 - 24		1	1	4
Day Total		569	584	565

15-Minute Volumes

Time Start	Mon Mar 2	Tue Mar 3	Wed Mar 4	Thu Mar 5
0:00		0	0	0
0:15		1	0	0
0:30		0	0	0
0:45		0	0	0
1:00		0	0	1
1:15		0	0	0
1:30		0	0	0
1:45		0	0	1
2:00		0	1	0
2:15		1	0	0
2:30		0	0	0
2:45		0	0	0
3:00		0	0	0
3:15		0	0	1
3:30		0	0	0
3:45		0	0	0
4:00		0	0	1
4:15		1	0	0
4:30		1	0	0
4:45		2	1	0
5:00		0	0	1
5:15		2	1	1
5:30		1	2	0
5:45		1	1	1
6:00		2	3	2
6:15		0	2	1
6:30		6	4	4
6:45		4	5	6
7:00		8	5	3
7:15		9	11	5
7:30		11	12	11
7:45		20	22	18
8:00		15	11	15
8:15		16	13	16
8:30		12	22	17
8:45		15	14	6
9:00		10	12	12
9:15		14	12	14
9:30		12	10	13
9:45		9	11	9
10:00		16	15	10
10:15		4	10	9
10:30		11	9	11
10:45		13	8	9
11:00		10	10	9
11:15		9	10	15
11:30		10	13	13
11:45		9	16	7
12:00			13	12
12:15			4	8
12:30			12	10
12:45			12	11
13:00			15	9
13:15			10	13
13:30			12	8
13:45			11	16
14:00			12	10
14:15			13	9
14:30			11	11
14:45			8	11
15:00			15	10
15:15			12	11
15:30			4	7
15:45			11	14
16:00			14	23
16:15			13	5
16:30			9	11
16:45			10	6
17:00			9	12
17:15			9	9
17:30			8	11
17:45			9	10
18:00			7	7
18:15			8	8
18:30			4	9
18:45			3	9
19:00			3	5
19:15			4	1
19:30			4	2
19:45			2	1
20:00			3	5
20:15			1	1
20:30			3	3
20:45			2	0
21:00			0	5
21:15			3	0
21:30			2	2
21:45			0	0
22:00			4	1
22:15			2	0
22:30			2	1
22:45			0	0
23:00			1	0
23:15			0	0
23:30			0	0
23:45			0	1



Site notes:

Vehicle Speed Summary

Saanich Engineering Department

Count Id: C0070-01

Filename: Tudor Ave between Seaview Rd and McAnally Rd-Mar-2020.xlsm

Location: Tudor Ave between Seaview Rd and McAnally Rd

Note:

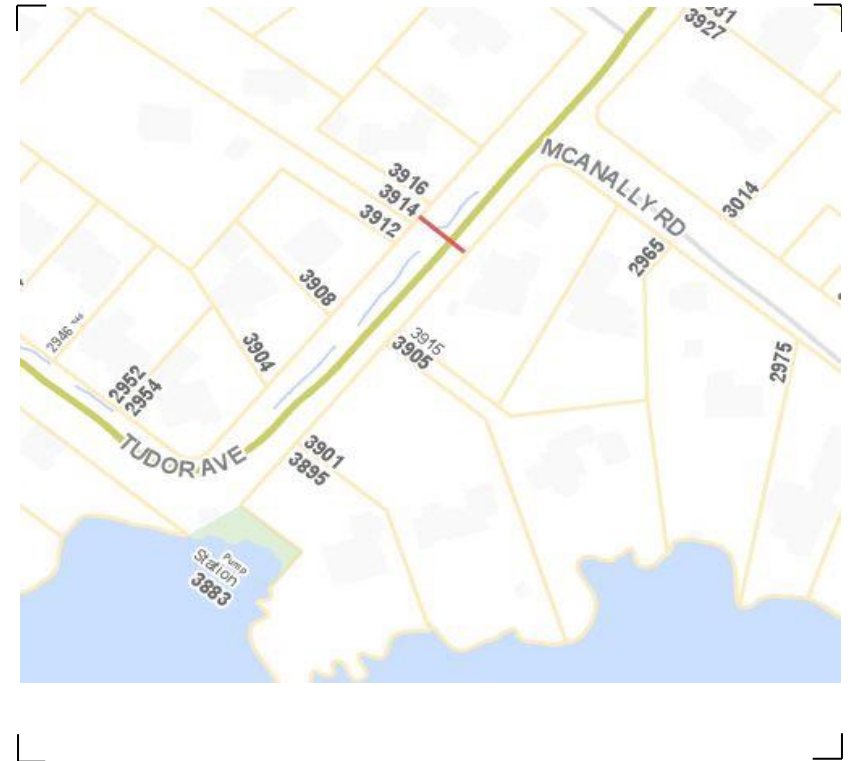
Direction: **East-West**

Dates: **March 03, 2020 To March 05, 2020**

Filtered data

AVG. SPEED	26 mph	42 km/h
50 % SPEED	26 mph	42 km/h
85 % SPEED	31 mph	50 km/h
95 % SPEED	33 mph	53 km/h

Location Map



Tudor Ave between Seaview Rd and McAnally Rd

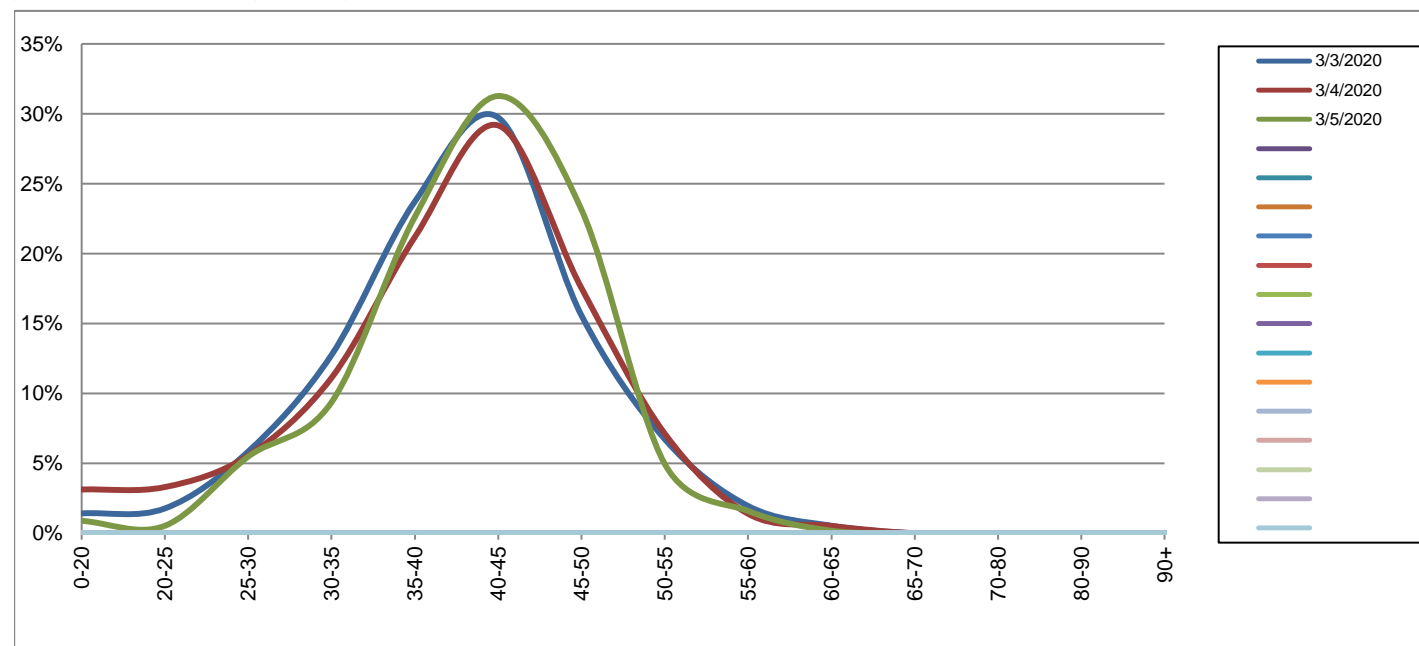
Westbound

March 3, 2020 to March 5, 2020

Daily Speed Bin Percentages															Daily Speed Bin Volumes														Total	Avg.
Bin #	1	2	3	4	5	6	7	8	9	10	11	12	13	14	1	2	3	4	5	6	7	8	9	10	11	12	13	14	Volume	Speed
Bin Speeds	0-20	20-25	25-30	30-35	35-40	40-45	45-50	50-55	55-60	60-65	65-70	70-80	80-90	90+	0-20	20-25	25-30	30-35	35-40	40-45	45-50	50-55	55-60	60-65	65-70	70-80	80-90	90+		
3/3/2020	1.4%	1.8%	5.8%	12.7%	23.7%	29.7%	15.6%	6.7%	1.9%	0.5%	0.0%	0.0%	0.0%	0.0%	8	10	33	72	134	168	88	38	11	3	0	0	0	0	565	40
3/4/2020	3.1%	3.3%	5.6%	11.1%	21.2%	29.2%	17.5%	7.1%	1.4%	0.5%	0.0%	0.0%	0.0%	0.0%	18	19	32	64	122	168	101	41	8	3	0	0	0	0	576	40
3/5/2020	0.9%	0.5%	5.5%	9.4%	22.6%	31.3%	23.1%	4.9%	1.6%	0.2%	0.0%	0.0%	0.0%	0.0%	5	3	31	53	128	177	131	28	9	1	0	0	0	0	566	41
Total	1.8%	1.9%	5.6%	11.1%	22.5%	30.1%	18.7%	6.3%	1.6%	0.4%	0.0%	0.0%	0.0%	0.0%	31	32	96	189	384	513	320	107	28	7	0	0	0	0	1707	40

Speed Data Summary

Bin #	1	2	3	4	5	6	7	8	9	10	11	12	13	14	Total
Bin Speeds	0-20	20-25	25-30	30-35	35-40	40-45	45-50	50-55	55-60	60-65	65-70	70-80	80-90	90+	
Survey Total	31	32	96	189	384	513	320	107	28	7	0	0	0	0	1707
% Total	1.8%	1.9%	5.6%	11.1%	22.5%	30.1%	18.7%	6.3%	1.6%	0.4%	0.0%	0.0%	0.0%	0.0%	100%
Accumulated %	1.8%	3.7%	9.3%	20.4%	42.9%	72.9%	91.7%	97.9%	99.6%	100.0%	100.0%	100.0%	100.0%	100.0%	
Inverse Accum. %	98.2%	96.3%	90.7%	79.6%	57.1%	27.1%	8.3%	2.1%	0.4%	0.0%	0.0%	0.0%	0.0%	0.0%	
Average Speed	40 KM/H														



Site notes:

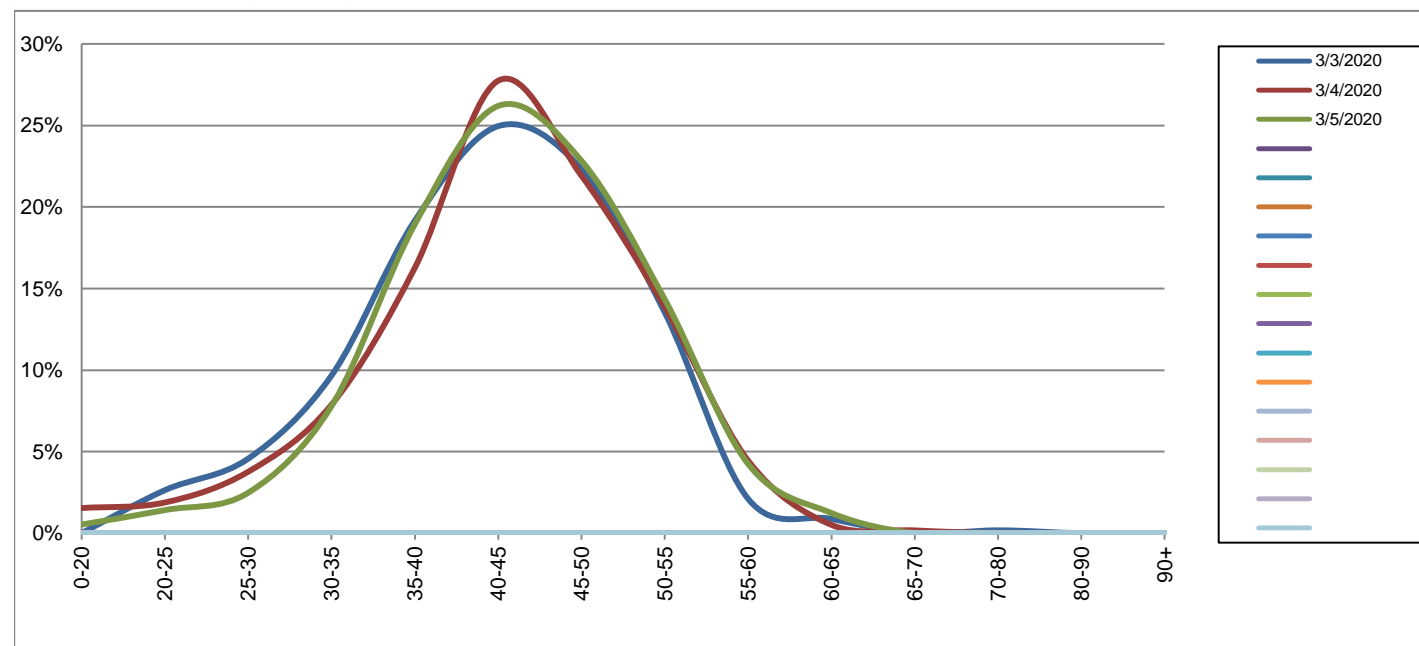
Tudor Ave between Seaview Rd and McAnally Rd

Eastbound
March 3, 2020 to March 5, 2020

Daily Speed Bin Percentages															Daily Speed Bin Volumes														Total	Avg.
Bin #	1	2	3	4	5	6	7	8	9	10	11	12	13	14	1	2	3	4	5	6	7	8	9	10	11	12	13	14	Volume	Speed
Bin Speeds	0-20	20-25	25-30	30-35	35-40	40-45	45-50	50-55	55-60	60-65	65-70	70-80	80-90	90+	0-20	20-25	25-30	30-35	35-40	40-45	45-50	50-55	55-60	60-65	65-70	70-80	80-90	90+		
3/3/2020	0.0%	2.6%	4.6%	9.7%	19.2%	25.0%	22.3%	13.5%	2.1%	0.9%	0.0%	0.2%	0.0%	0.0%	0	15	26	55	109	142	127	77	12	5	0	1	0	0	569	42
3/4/2020	1.5%	1.9%	3.8%	7.9%	16.3%	27.7%	21.9%	13.9%	4.5%	0.5%	0.2%	0.0%	0.0%	0.0%	9	11	22	46	95	162	128	81	26	3	1	0	0	0	584	43
3/5/2020	0.5%	1.4%	2.5%	7.8%	18.9%	26.2%	22.8%	14.3%	4.2%	1.2%	0.0%	0.0%	0.0%	0.0%	3	8	14	44	107	148	129	81	24	7	0	0	0	0	565	43
Total	0.7%	2.0%	3.6%	8.4%	18.1%	26.3%	22.4%	13.9%	3.6%	0.9%	0.1%	0.1%	0.0%	0.0%	12	34	62	145	311	452	384	239	62	15	1	1	0	0	1718	43

Speed Data Summary

Bin #	1	2	3	4	5	6	7	8	9	10	11	12	13	14	Total
Bin Speeds	0-20	20-25	25-30	30-35	35-40	40-45	45-50	50-55	55-60	60-65	65-70	70-80	80-90	90+	
Survey Total	12	34	62	145	311	452	384	239	62	15	1	1	0	0	1718
% Total	0.7%	2.0%	3.6%	8.4%	18.1%	26.3%	22.4%	13.9%	3.6%	0.9%	0.1%	0.1%	0.0%	0.0%	100%
Accumulated %	0.7%	2.7%	6.3%	14.7%	32.8%	59.1%	81.5%	95.4%	99.0%	99.9%	99.9%	100.0%	100.0%	100%	
Inverse Accum. %	99.3%	97.3%	93.7%	85.3%	67.2%	40.9%	18.5%	4.6%	1.0%	0.1%	0.1%	0.0%	0.0%	0.0%	
Average Speed	43 KM/H														



Site notes:

Tudor Ave between Seaview Rd and McAnally Rd

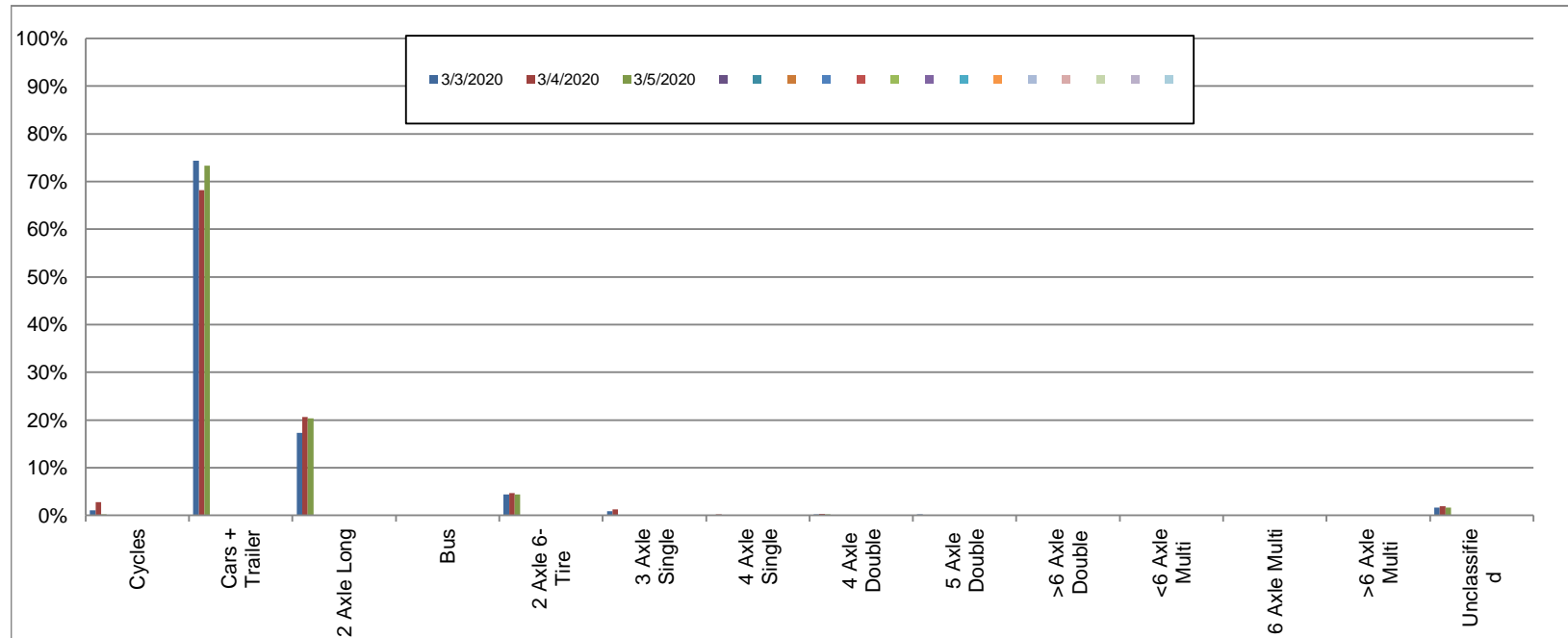
Westbound

March 3, 2020 to March 5, 2020

Daily Class Bin Percentages															Daily Class Bin Volumes											Total Volume				
Bin #	1	2	3	4	5	6	7	8	9	10	11	12	13	14	1	2	3	4	5	6	7	8	9	10	11		12	13	14	
Bin Class	Cycles	Cars + Trailer	2 Axle Long	Bus	2 Axle 6-Tire	3 Axle Single	4 Axle Single	4 Axle Double	5 Axle Double	>6 Axle Double	<6 Axle Multi	6 Axle Multi	>6 Axle Multi	Unclassified	Cycles	Cars + Trailer	2 Axle Long	Bus	2 Axle 6-Tire	3 Axle Single	4 Axle Single	4 Axle Double	5 Axle Double	>6 Axle Double	<6 Axle Multi	6 Axle Multi	>6 Axle Multi	Unclassified		
3/3/2020	1.1%	74.3%	17.3%	0.0%	4.4%	0.9%	0.0%	0.2%	0.2%	0.0%	0.0%	0.0%	0.0%	1.6%	6	420	98	0	25	5	0	1	1	0	0	0	0	0	9	565
3/4/2020	2.8%	68.2%	20.7%	0.0%	4.7%	1.2%	0.2%	0.3%	0.0%	0.0%	0.0%	0.0%	0.0%	1.9%	16	393	119	0	27	7	1	2	0	0	0	0	0	0	11	576
3/5/2020	0.2%	73.3%	20.3%	0.0%	4.4%	0.0%	0.0%	0.2%	0.0%	0.0%	0.0%	0.0%	0.0%	1.6%	1	415	115	0	25	0	0	1	0	0	0	0	0	0	9	566
Total	1.3%	71.9%	19.4%	0.0%	4.5%	0.7%	0.1%	0.2%	0.1%	0.0%	0.0%	0.0%	0.0%	1.7%	23	1228	332	0	77	12	1	4	1	0	0	0	0	29	1707	

Class Data Summary

Bin #	1	2	3	4	5	6	7	8	9	10	11	12	13	14	Total Volume
Bin Class	Cycles	Cars + Trailer	2 Axle Long	Bus	2 Axle 6-Tire	3 Axle Single	4 Axle Single	4 Axle Double	5 Axle Double	>6 Axle Double	<6 Axle Multi	6 Axle Multi	>6 Axle Multi	Unclassified	Total Volume
Survey Total	23	1228	332	0	77	12	1	4	1	0	0	0	0	29	1707
% Total	1.3%	71.9%	19.4%	0.0%	4.5%	0.7%	0.1%	0.2%	0.1%	0.0%	0.0%	0.0%	0.0%	1.7%	100%
Accumulated %	1.3%	73.3%	92.7%	92.7%	97.2%	97.9%	98.0%	98.2%	98.3%	98.3%	98.3%	98.3%	98.3%	100.0%	
Inv. Accum. %	98.7%	26.7%	7.3%	7.3%	2.8%	2.1%	2.0%	1.8%	1.7%	1.7%	1.7%	1.7%	1.7%	0.0%	



Classification Descriptions

Bin #	Bin Description
1	Motorcycles
2	Passenger cars, including those with recreational trailers
3	2-axle pick-ups, vans, and RVs, including those with recreational trailers
4	Buses
5	2-axle, 6-tire single units
6	3-axle single units
7	4-axle single units
8	3-axle or 4-axle double unit
9	5-axle double unit
10	6-, 7-, or 8-axle double unit
11	5-axle multiple unit
12	6-axle multiple unit
13	7-or-more-axle multiple unit
14	Vehicles that could not be classified

Site notes:

Tudor Ave between Seaview Rd and McAnally Rd

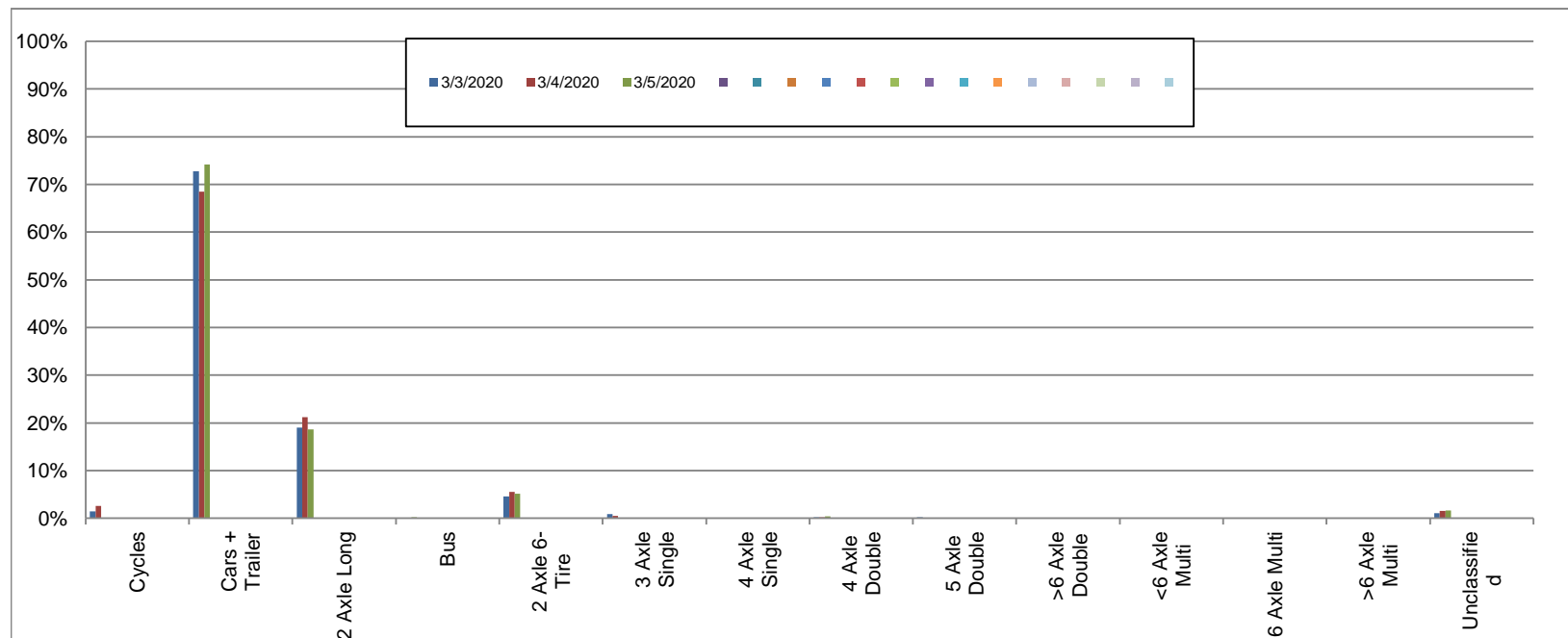
Eastbound

March 3, 2020 to March 5, 2020

Daily Class Bin Percentages															Daily Class Bin Volumes											Total Volume				
Bin #	1	2	3	4	5	6	7	8	9	10	11	12	13	14	1	2	3	4	5	6	7	8	9	10	11		12	13	14	
Bin Class	Cycles	Cars + Trailer	2 Axle Long	Bus	2 Axle 6-Tire	3 Axle Single	4 Axle Single	4 Axle Double	5 Axle Double	>6 Axle Double	<6 Axle Multi	6 Axle Multi	>6 Axle Multi	Unclassified	Cycles	Cars + Trailer	2 Axle Long	Bus	2 Axle 6-Tire	3 Axle Single	4 Axle Single	4 Axle Double	5 Axle Double	>6 Axle Double	<6 Axle Multi	6 Axle Multi	>6 Axle Multi	Unclassified		
3/3/2020	1.4%	72.8%	19.0%	0.0%	4.6%	0.9%	0.0%	0.2%	0.2%	0.0%	0.0%	0.0%	0.0%	1.1%	8	414	108	0	26	5	0	1	1	0	0	0	0	0	6	569
3/4/2020	2.6%	68.5%	21.2%	0.0%	5.5%	0.5%	0.0%	0.2%	0.0%	0.0%	0.0%	0.0%	0.0%	1.5%	15	400	124	0	32	3	0	1	0	0	0	0	0	0	9	584
3/5/2020	0.0%	74.2%	18.6%	0.2%	5.1%	0.0%	0.0%	0.4%	0.0%	0.0%	0.0%	0.0%	0.0%	1.6%	0	419	105	1	29	0	0	2	0	0	0	0	0	9	565	
Total	1.3%	71.8%	19.6%	0.1%	5.1%	0.5%	0.0%	0.2%	0.1%	0.0%	0.0%	0.0%	0.0%	1.4%	23	1233	337	1	87	8	0	4	1	0	0	0	0	24	1718	

Class Data Summary

Bin #	1	2	3	4	5	6	7	8	9	10	11	12	13	14	Total Volume
Bin Class	Cycles	Cars + Trailer	2 Axle Long	Bus	2 Axle 6-Tire	3 Axle Single	4 Axle Single	4 Axle Double	5 Axle Double	>6 Axle Double	<6 Axle Multi	6 Axle Multi	>6 Axle Multi	Unclassified	Total Volume
Survey Total	23	1233	337	1	87	8	0	4	1	0	0	0	0	24	1718
% Total	1.3%	71.8%	19.6%	0.1%	5.1%	0.5%	0.0%	0.2%	0.1%	0.0%	0.0%	0.0%	0.0%	1.4%	100%
Accumulated %	1.3%	73.1%	92.7%	92.8%	97.8%	98.3%	98.3%	98.5%	98.6%	98.6%	98.6%	98.6%	98.6%	100.0%	
Inv. Accum. %	98.7%	26.9%	7.3%	7.2%	2.2%	1.7%	1.7%	1.5%	1.4%	1.4%	1.4%	1.4%	1.4%	0.0%	



Classification Descriptions

Bin #	Bin Description
1	Motorcycles
2	Passenger cars, including those with recreational trailers
3	2-axle pick-ups, vans, and RVs, including those with recreational trailers
4	Buses
5	2-axle, 6-tire single units
6	3-axle single units
7	4-axle single units
8	3-axle or 4-axle double unit
9	5-axle double unit
10	6-, 7-, or 8-axle double unit
11	5-axle multiple unit
12	6-axle multiple unit
13	7-or-more-axle multiple unit
14	Vehicles that could not be classified

Site notes: